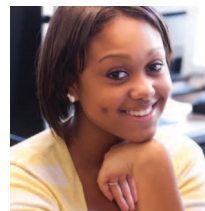




WISCONSIN LUTHERAN HIGH SCHOOL CAPITAL CAMPAIGN

Gifted for  
*Praise!*



 **WISCONSIN LUTHERAN**  
HIGH SCHOOL  
GUIDED BY FAITH. DRIVEN BY EXCELLENCE.



Gifted for  
*Praise!*

*"I will sacrifice a freewill offering to you;  
I will praise your name, LORD, for it is good." (Psalm 54:6)*

## OUR PURPOSE

Christ's love compels us to provide a comprehensive Christian secondary education to Milwaukee area youth and serve as a ministry resource for the WLHS conference.

## GIFTED FOR PRAISE

For more than a century, Wisconsin Lutheran High School – guided by our united faith in our Savior Jesus – has prepared generations of teens for lives of worship and Christian service through the power of Christ-centered education.

The hallmarks of this Lutheran ministry include academic excellence; athletic achievement; award-winning co-curriculars; God-fearing and dedicated faculty, staff and administrators; and the generous support of our partner congregations, alumni and friends like you.

In order to continue providing this level of excellence in the future and carry out our mission, we need a firm financial foundation and high-quality facilities. The *Gifted for Praise* campaign seeks to help us continue to accomplish our ministry goals by strengthening our overall financial stability and expanding our fine arts facilities to better serve Christ's youth as they develop their gifts for God's praise.

On behalf of our Board of Directors, faculty, staff and students, I humbly request and encourage your participation in this campaign.

As always, we thank you for your support and prayers.

To God be the Glory,



Rev. James Kleist ('68)  
Superintendent



“ The WLHS Fine Arts program is a treasure to be cherished and improved. It would be great to provide even more opportunities and to see even more blessings with facilities which would make it possible to train more students and to develop more talents. **These are talents which will benefit our churches in abundant measure in the years ahead.** ”

Rev. David Kolander

Parent of one current WLHS student and two WLHS graduates,  
Pastor of Christ the Lord, Brookfield, WI, and former board member



Gifted for  
**Praise!**

*“Commit to the Lord whatever you do and your plans will succeed”  
(Proverbs 16:3)*

## OUR FUTURE TO GOD'S PRAISE

The funds raised in this capital fund campaign will be used to put us in the best financial position in order to improve our ability to meet the needs of current and future students while expanding our facilities.

It has been fifteen years since the last major expansion at WLHS, and the Fine Arts facilities have not been improved since our initial building in 1958. It is time to address the challenges of:

- Inadequate choral space;
- Overcrowded music facilities;
- Insufficient ensemble and instrumental practice rooms and storage;
- Lack of space for theatrical set construction and storage;
- An antiquated main entrance;
- Absence of dedicated student gathering space; and,
- Deficiency of air-conditioning in the majority of classrooms.

The expansion and renovation would include:

- New **Fine Arts facilities**;
- **Student center/atrium**;
- Renovation of the **main entrance**;
- **Project Lead the Way® (pre-engineering curriculum) classrooms**;
- **Air-conditioning** in all of the classrooms in the south wing.

Cost estimate for the total expansion is \$5 million of which this campaign targets \$2.5 - \$3.5 million.

NOTE: These cost estimates are preliminary. The plans presented here are subject to future decisions as to what we will ultimately build. After this appeal has been conducted, a building project budget will be developed for formal approval by WLHS Board of Directors. This budget will include the financial commitments made in the campaign, the actual gifts and grants received, and a plan for financing the balance through low-interest, long-term bonds. The more funds that we raise in this campaign, the less (if anything) we might consider borrowing.

## OUR CAMPAIGN FINANCIAL GOALS

Through the ongoing generosity of our alumni, friends, and congregational partners, we seek to raise **\$5 - \$7 million** in gifts over the next three years to God's praise.

This will allow us to:

- **Enhance and improve outdated facilities** - \$2.5 - \$3.5 million towards total cost of project.  
[Any difference, if any, between the funds raised and the actual expansion costs would be financed through low-interest, long-term bonds]
- **Responsibly manage our operating debt** - \$1 - \$1.5 million, and
- **Support our current ministry** - \$1.5 - \$2 million.

The funds received will be divided between these three areas.

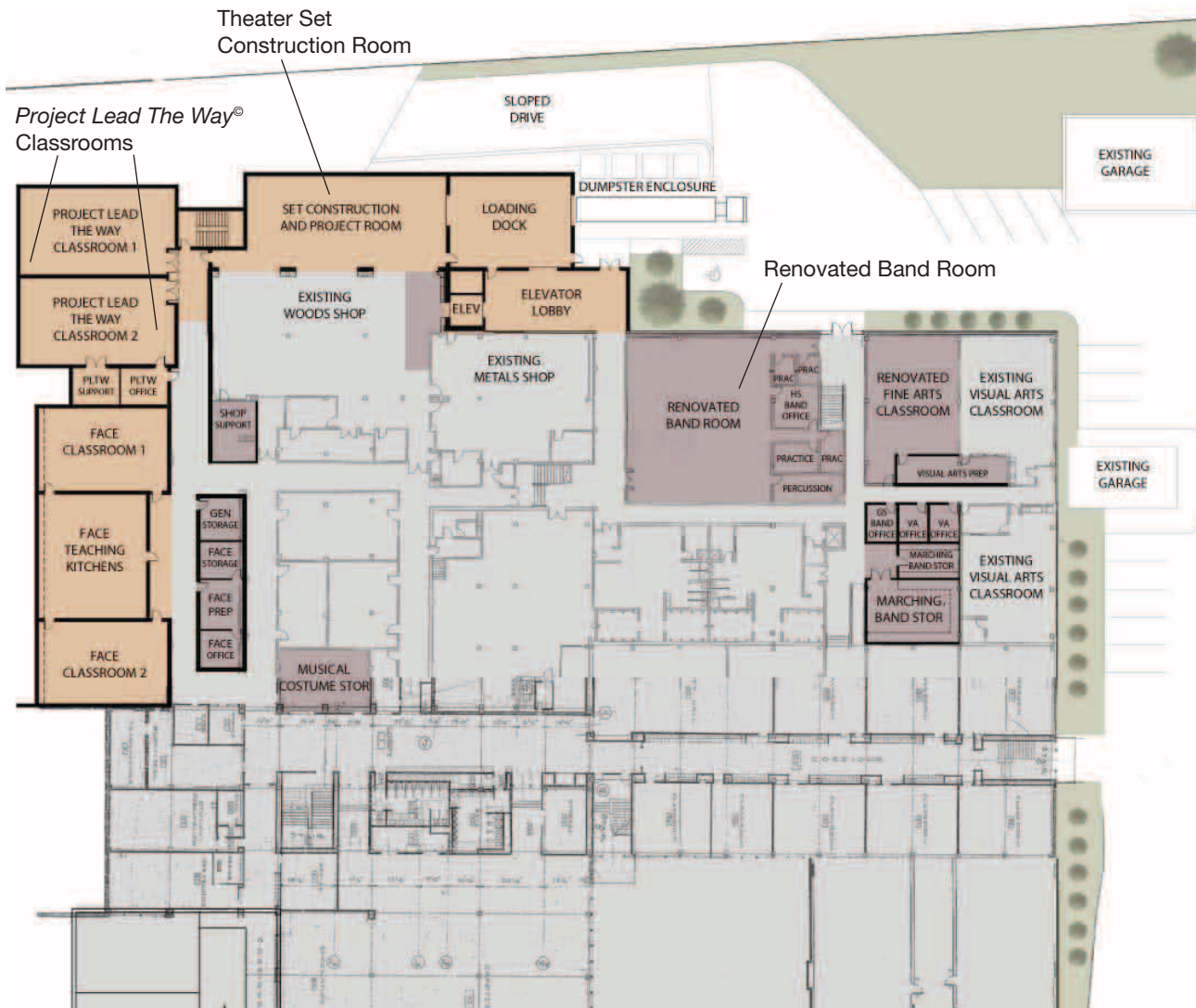
Response to our introduction of the campaign and its goals has been very positive. We encourage you to check out a list of **frequently asked questions** that appears on our website at [www.WLHS.org/GiftedforPraise](http://www.WLHS.org/GiftedforPraise).

“ We appreciate the opportunity to support the *Gifted for Praise* campaign. The campaign will enable **WLHS to expand its efforts to provide a broad-based Christian education, both academically and in programs outside the classroom.** Among these programs is a terrific fine arts program. This program is a key training ground for future leaders in providing musical praise and worship in the years to come. ”

Ken Krueger ('74)  
Parent of three WLHS graduates, former board member and active volunteer

As a result of the good work of the Master Site Planning Committee, and significant input from our faculty, board, and administration, these conceptual drawings were designed by Korb-Tredo architects.

## PRELIMINARY PROPOSAL OF NEW LOWER LEVEL



- Existing Structure
- New Construction
- Renovated Areas

“ Classrooms specifically designed to teach the application of math, science, and technology will truly be a **blessing to the engineering curriculum** at Wisconsin Lutheran. ”

James Hahm ('93)  
Project Lead the Way® instructor at WLHS





“ Experiencing God’s Word every day at WLHS built up my faith. It empowered me to stand my ground on my beliefs throughout college. Through the work ethic that I gained at WLHS, my transition to college was quite easy, and I felt prepared for all my courses. Supporting the growth of WLHS will give other students this same foundation. ”

Kevin Zeitler ('08)

Offensive Lineman at the University of Wisconsin-Madison, 2008-12



*Artist's rendering of the Fine Arts facilities and student center.*





*Artist's rendering of new entrance, student center and Fine Arts facilities.*

“ No Lutheran school would be complete without a high quality fine arts program. It is especially **through music that the Word of God can become personally meaningful for the Christian.** Music and art enhance worship, engage the hearts and minds of those who worship, and provide a splendid means of expressing personal faith and emotions.

Wisconsin Lutheran High School is preparing the next generation of church and community leaders. **Are there any more important leaders that can be developed than the future worship leaders in our churches? ”**

Principal Ned Goede  
Parent of four WLHS graduates, Principal of WLHS





Gifted for  
*Praise!*

*"Thanks be to God for his indescribable gift!"*  
(2 Corinthians 9:15)

## OUR FINANCIAL GOALS

### 1) ENHANCING AND IMPROVING OUTDATED FACILITIES - \$2.5 - \$3.5 million

WLHS' Fine Arts program has a rich history and a sterling reputation for its excellence. However, much of our current Fine Arts facilities, which were built in the 1950's, are antiquated and in poor condition. In addition, there is an urgent need for appropriate space for our expanding technology and engineering programs. We also lack a student gathering area (or commons); our main entrance is outdated and nearly two-thirds of our classrooms lack air-conditioning. Through *Gifted for Praise*, we can create facilities to serve the needs of our 21st century students.

The capital expansion project will:

- Expand and enhance **Fine Arts facilities**
  - New choral performance room
  - Renovate and update the band room
  - Expand theater for set construction
  - Add fine arts offices and practice rooms
- Construct **Project Lead the Way®** classrooms
- Create a **student center/atrium**
- Develop a new **main entrance on Glenview Avenue**
- Install **air-conditioning** to the south wing classrooms

### 2) RESPONSIBLY MANAGING OUR OPERATING DEBT: \$1 - \$1.5 million

God has guided the high school through several financial challenges over the course of its history. The current challenges include a million dollar line of credit for cash flow purposes and a million dollar short-term loan due in three years.

Although we are hopeful that our bank will renew the loan for a new term, *Gifted for Praise* seeks to pay off this operational debt which reduces the risk of high debt in uncertain financial times and moves the school to more stable fiscal viability. Together we can save thousands of dollars by pre-paying the loan principal. Responsibly managing our debt assures that our ministry's resources do not become strained by loan payments and also puts our ministry in the best position possible to prepare for growth and expansion.

### 3) SUPPORTING OUR CURRENT MINISTRY: \$1.5 - \$2 million

Finally, the generous offerings to *Gifted for Praise* allow us to continue to pursue our mission of raising up the next generation of Christian leaders for our community, congregations and the world by supporting our operating fund. All of this helps us deliver our Christ-centered education with high-academic standards in a nurturing environment as we partner with parents and churches to disciple the next generation.

“ The improved facilities will continue and improve upon a long history of excellence in developing the talents given by God. At the same time, WLHS has an **obligation to our conference congregations and to our student population to employ good stewardship in the financial management of the ministry.** The accumulation of operating debt interferes with the stability of the school and prohibits the school from taking steps to expand and develop the ministry. Getting control of that debt, by paying off current loans, will enable the school to focus on its ministry and to use the gifts and tuition receipts for the provision of an excellent educational experience. ”

Larry Jakubowski

Father of two WLHS graduates, Administrative Law Judge, and Chairman of the WLHS Board of Directors



Gifted for  
*Praise!*

*"I always pray with joy because of your partnership in the gospel from the first day until now, being confident of this, that he who began a good work in you will carry it on to completion until the day of Christ Jesus." (Philippians 1:4-6)*

## OUR OPPORTUNITY

### YOUR CONGREGATIONAL GIFTS

A central focus of the campaign will be asking all congregations supportive of the mission of Wisconsin Lutheran High School to consider a “Hoped for Gift” given over 3 years.

An attractive option for congregation gifts will be participating in the Mutual Benefit Appeal (MBA) strategy. Through the program congregations will have the opportunity to raise funds for their own capital/building needs while making a significant gift to WLHS. Using the service of *The James Company*, our campaign consultants, congregations will have the opportunity to participate with a cluster of other congregations to raise funds both for WLHS and their own congregations.

The options for a congregation to make a gift would include:

1. **Participating in a capital fund appeal in your congregation** for your capital/building needs with the assistance of the *The James Company*. A portion of the funds raised will be used to make a gift to the *Gifted for Praise* capital campaign.
2. **Conducting an appeal to your members for a special gift** to the high school’s Capital Fund. *The James Company* would provide materials and training on how to conduct such an appeal.
3. **Making a special congregational gift** to the high school’s campaign from your congregation’s resources: operating budget, foundation, reserves, or endowments.

### YOUR INDIVIDUAL GIFTS

In addition to congregational gifts, we are asking individuals, foundations, and businesses to consider a major gift to the *Gifted for Praise* capital campaign.

### YOUR MATCHING GIFTS

We are also seeking through individual gifts given to WLHS or through the congregations, matching gifts from corporations, employers and foundations wherever it is possible.

### YOUR PRAISE TO GOD

Our campaign cabinet presents this to each of us as an opportunity to reflect upon God’s grace and to renew our commitment to praise him with our gifts and prayers. Your support at this time will inspire us to praise Christ and will bless our students to even greater praise of our Savior. Join other alumni, parents and community friends in making this a reality.



To make a gift or learn more about our ministry, visit [www.WLHS.org](http://www.WLHS.org) or scan the bar code at left.

“ Our partners should consider the long term importance of the ministry at WLHS for Christ’s kingdom. Look around your congregation, and you will find that **many of your leaders of today were students of WLHS yesterday**. This school develops the leadership skills and the firm foundation of faith that will provide the leaders of the next generation. ”

Kent Raabe ('69)

Son of alumni, father of three WLHS graduates and Foundation Board Member



Gifted for  
*Praise!*

*"For the LORD is good and his love endures forever;  
his faithfulness continues through all generations." (Psalm 100:5)*

## OUR PRAYER FOR GOD'S PRAISE

*Dear heavenly Father,*

Hear the prayer of **grateful people:**

For over a century you have favored us by prospering Christ-centered high school education among us. Thousands of young people have grown in their faith, made friends for life, and were educated to be solid citizens and faithful church members. What a treasure we have in Wisconsin Lutheran High School!

Hear the prayer of **concerned people:**

Satan continues to attack young people. Watch over them. Send angels, multitudes of angels. Help our children to grow into strong Christian adults, wise and discerning. Inspire them to be salt and light in your world. Make them dangerous to Satan's schemes and valuable to your kingdom.

Hear the prayer of **worshipful people:**

We love to praise you, and we love it even more when our young people are praising you. We have a dream to expand our fine arts space at WLHS and we must have your blessing in order to succeed. Our young people are gifted—help us help them use their gifts to praise. Bless the planning of *Gifted for Praise*, and we implore you to bless its outcome as well.

In Jesus' name. Amen

Prayer written by Rev. Mark Jeske ('70)  
Father of one current WLHS student and three WLHS graduates,  
Pastor of *Time of Grace* ministry

**“Using music and visual arts to give God our praise has always been a key element of our Lutheran heritage.** So many of tomorrow's leaders have taken advantage of Wisco's programs in the fine arts area that we have outgrown the facilities. By supporting the *Gifted for Praise* campaign, we are able to assure the future growth and success of the program. ”

Joan Krueger  
Parent of three WLHS graduates and active volunteer

## OUR CAMPAIGN LEADERSHIP TEAM

We are grateful for the dedicated supporters who are giving of their time and talents to make the *Gifted for Praise* campaign a success.

Steve ('78) and Heidi ('79) Bohlmann  
Brian ('81) and Michelle Cramer  
Jon and Marjorie Flanagan  
Jim ('67) and Lois ('65) Guenther  
Jeff ('01) and Nissa ('01) Guenther  
Lilli Gust ('65)  
Kevin Hanson ('90)  
Larry and Kathi Jakubowski  
Rev. Mark Jeske ('70)  
Ken ('74) and Joan Krueger  
Marty ('72) and Joy ('73) Kuphall

Fred Lautz and Mary Jo Brown  
Steve and Doris Pertzsch  
Jeff and Yvonne Quint  
Kent ('69) and Christine ('71) Raabe  
Mark ('75) and Wendy Reinemann  
Steve and Peggy Stone  
Lawrence Totsky  
Brett ('93) and Andrea Valerio  
Mark Wilson ('93)  
Todd Witte ('69)  
Kevin Zeitler ('08)

## OUR CONFERENCE CONGREGATIONS

Apostles of Christ  
Atonement  
Calvary, Thiensville  
Centennial  
Christ, Big Bend  
Christ, Milwaukee  
Christ, Pewaukee  
Christ the Lord  
Divine Peace  
Fairview  
Faith  
Garden Homes  
Gethsemane  
Gloria Dei-Bethesda  
Good Shepherd  
Grace, Milwaukee  
Grace, Waukesha  
Jordan  
Loving Shepherd

Messiah  
Mt. Calvary  
Mt. Lebanon  
Nain  
Nathanael  
Pilgrim  
Redemption  
Resurrection  
Risen Savior  
St. Andrew  
St. Jacobi  
St. James  
St. John, Lannon  
St. John, Milwaukee  
St. John, Mukwonago  
St. John, Oak Creek  
St. John, Wauwatosa  
St. Lucas  
St. Marcus

St. Mark  
St. Matthew  
St. Paul, Cudahy  
St. Paul, Franklin  
St. Paul, Milwaukee  
St. Paul, Muskego  
St. Peter  
St. Philip  
Salem, Cramer Street  
Salem, 107th Street  
Siloah  
Star of Bethlehem  
The Point of Grace  
Trinity, Waukesha  
Victory of the Lamb  
Woodlawn  
Zebaoth  
Zion, Hartland  
Zion, South Milwaukee

## OUR ADMINISTRATION AND STAFF

Rev. James Kleist, Superintendent  
Mr. Ned Goede, Principal  
Rev. Kenneth Fisher, Director of Mission Advancement  
Mrs. Yvonne Quint, Associate Director of Mission Advancement  
Mr. Matt Bilitz, Associate Director of Mission Advancement



Wisconsin Lutheran High School  
330 N. Glenview Ave.  
Milwaukee, WI 53213

(414) 453-4567 FAX: (414) 453-3001  
www.WLHS.org